

Bedales  spoorns

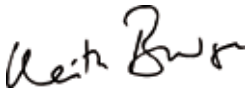


Celebrate Success

Welcome

We have chosen inquisitiveness, individuality and independence as the themes for this celebration of success at Bedales. One of the many appealing elements of teaching in our schools is the unashamed prizing of these qualities. What are they? How do we ensure that we have a culture that promotes them? How do we know we have them? These are admirable but elusive qualities to many schools. In these pages you will read how they are being pursued with rigour and vigour by Bedales students and teachers – through the sixth form extended projects, the Director’s Cut drama season and the life-changing successes of our Swaziland project.

I hope you will get some sense of our appetite for learning at Bedales, and especially for those joining us for the first time on Parents’ Day, that you are confronted by it in some way, shape or form on your visit.



Keith Budge,
Headmaster, Bedales Schools

Aims of Bedales Schools

To develop inquisitive thinkers with a love of learning who cherish independent thought.

To enable students’ talents to develop through doing and making.

To foster individuality and encourage initiative, creativity and the appreciation of the beautiful.

To enable students, former students, parents and staff to take pride in the community’s distinctiveness, and to feel valued and nourished by the community.

To foster interest beyond the school – engaging with the local community and developing a national and international awareness.

Parents' Day

Saturday 2 July 2011

Scheduled Events

9.00	Tennis 6.2.v 6.1 girls' and boys' singles and doubles (Top Courts)
10.00	Overseas parents' meeting (Boys' Flat Welcome Area); coffee and biscuits available
10.00	Junior boys' singles tennis tournament (Astroturf)
11.00 - 12.00	Dance display (Quad)
11.45	Tennis Finals senior mixed doubles, senior boys' singles, junior boys' singles (Top Courts)
12.30 - 1.30	Reception for parents of current 6.1 going into 6.2 Flat in September (Orchard Building)
1.00	Tennis presentation of trophies and medals (Top Courts)
1.30	Presentation of Badley Foundation Tree Auction (near ODW)
2.00 - 6.00	Cricket 1st XI vs Stoner (Memorial Pitch)
2.00	Talk by staff and students on the progress of the Bedales Swaziland Project (Reading Room)
2.30 - 5.00	Summer Production 'Holes' (Theatre)
3.00	Recorder Ensemble performance (Library)
4.00 - 4.30	Music (Steephurst Lawn)
From 4.00	Tea in the marquee (top of Steephurst Pitches)
4.15	Bedales Swaziland Project Bollinger raffle draw (outside marquee)
4.45	Collection of postcard Silent Auction
5.00 - 6.00	Reception for OBs and Bedales Association (Lupton Hall)
6.00	Summer Concert – Quad Followed by light refreshments and evening serenade – Boys' Flat Courtyard (8.15pm approx. end)

Parents' Day 2011

Display and some special Bedales places

Art

Art Block and Gallery: 10.00 - 6.30

Exhibition of students' work – this includes work from all year groups, including 6th form and the Art BAC.
(Also open all day on Sunday).

Design

Design Department workshops: 11.00 – 6.00

Textiles and Product Design Exhibition.

Outdoor Work

Barnyard:

BAC course display.
Photographic display of Badley weekends revisited.

Bakehouse: from 10.30

Parents' Day Bake – bread available.
Bedales reared frozen lamb packs for sale.

Cecily's Garden: plant sale from 11.00

Geography

Geography Block: 2.00 - 4.00

Display of Block 3 extended projects – geographical investigations.
Block 4 Morocco display.

History

Orchard Building: all day

Displays in classrooms.

ICT

Exhibition

Hub: 10.30 - 3.45

Student laptop scheme and advice.
Parents online – what's available.
Interactive whiteboard – various displays.
TVOIP – television across the network.
Live events from the Quad broadcast in locations around the Orchard Building.
Display of photos and canvases produced within the school.

Library

Open all day

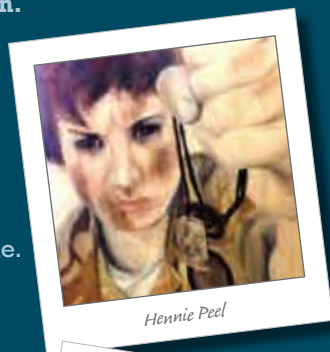
Postcard charity

Silent auction in aid of Save the Children and Swaziland:
10.00 - 4.00 (collection at 4.45)

Second-hand book sale

Proceeds to be shared between Swaziland and Cecily's Fund

Recorder Ensemble performance (3.00)



Library Steps

Swaziland Project

a display of the project so far and exciting plans for next year. Local jewellery and craft items, Bedales bags, Bollinger raffle tickets available to buy. "Sponsor a child" information available.

Lawn behind the library

Duke of Edinburgh Award Display

Orchard

Covered way, by the Orchard

Copies of the student literary magazine **Poet's Stone**.

Bedales Parents' Association, Bedales Association and Bedales Schools Development Trust: tea / coffee available

Fair Trade Committee stall

Display of this year's senior Classics trip to Greece (Parents of Senior Classicist tour to Greece – invited for Champagne and strawberries).

Grin Campaign – Claudia White

Information and get involved in a photo opportunity www.grincampaign.com

Orchard Building

**Extended Project display
New PE kit display**

Quiet place

Cecily's Garden (barnyard)

Open all day for those seeking tranquillity.

Drama

Drama Studio: 12.15 - 1.15

Lamda performances

Science Department

"Energy"

Biology Lab 5 10.30 - 4.00

Lab 6 display of 6th form project work.

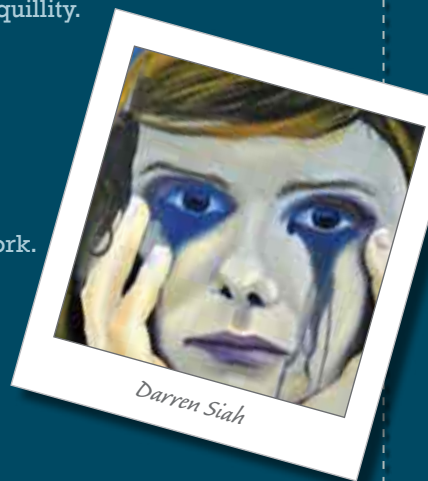
Chemistry Lab 2: 11.00 - 4.00

Physics Lab 3: 11.00 - 4.00

Theatre

2.30 - 5.00

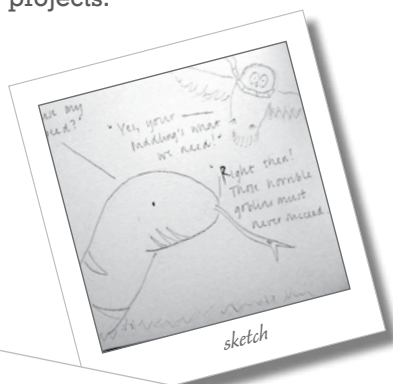
Summer Production: Holes



Inquisitiveness

Extended Projects

In last year's Parents' Day brochure we described the work produced by our first body of 6.1 students to take the new Extended Project qualification. They were phenomenally successful, with the overwhelming majority receiving very well deserved A* and A grades. This year's 6.1s had a lot to live up to, therefore, and although the marks are not in yet, they astounded us once again with their creativity, academic rigour and the enjoyment that they showed in undertaking their projects.



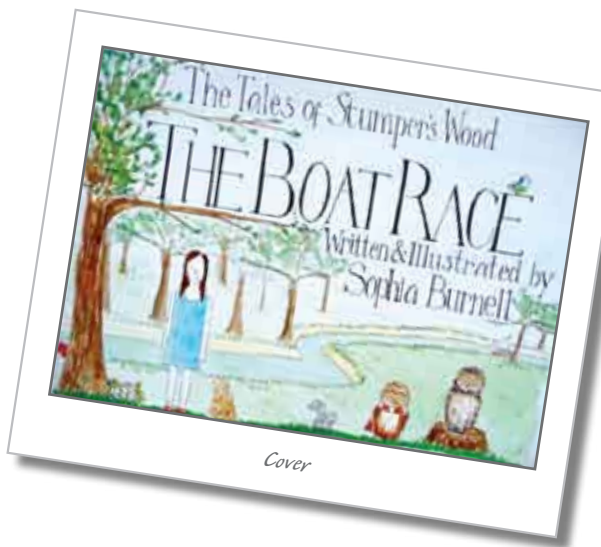
For those who have not heard of the Extended Project before, it really is something a bit different. Students are given the freedom to plan, research and manage a project in any field whatsoever – preferably in something completely different from their normal AS Level curriculum. They might choose to write an academic dissertation on something that interests them or produce a design according to a brief. They might even choose to make something, developing new skills and crafts as they go: last year's Hebridean dress by Rosie Nicolson (A*) and the study of felt making including the construction of a felt bag by Imogen Kirby (A*) are good examples of this. Assessment is based on the project process rather than the outcome, so to get a good grade, a student must show mastery of organisation, project management, presentation skills and most importantly, independent working. This is where Bedalians have a real edge and our Extended Project course remains a demanding but very popular and successful choice for incoming 6.1s.

The variety and ambition reflected by this year's projects are as impressive as ever. Those who opted for dissertations investigated the historical (including Hugo Fell's study of Julius Caesar and Cormac McShane's work on the tomb of Alexander the Great), the literary (Tegen Evans wrote about

changing attitudes in children's literature and Christy Callaway-Gale translated poems between English and Spanish), the technological (Tom Hardiman's investigation of the future of the aviation industry and Ollie Bradley's report on the Dead Sea Canal engineering project) and the more esoteric (Kim Viljoen's Legend of the Thunderbird, Emma Sueref's investigation into 2012 disaster myths and Josh Graham's study of dreams). As expected, the creative arts were to the fore again, typified by Kate Macrae's stage direction of Dylan Thomas' *A Child's Christmas in Wales* and Jessica Lester's "Strictly Come Dancing" style adventure in dance culminating in a tango performance. Max Cobb wrote, directed and filmed a music video while Fred Aspel filmed a TV advertisement for a commercial product. Other projects had a more ecological, political or philanthropic slant, with Claudia Turner investigating deforestation in Indonesia, Olivia Yetman reporting on charitable giving to non-humanitarian causes and Sophia Turner discussing the political situation in the former Soviet republic of Georgia. Sam McNeil investigated the benefits of boxing and gave a moving account of how a US boxing club was transforming the lives of young people in Louisville, Kentucky.

Extracts from many of these projects can be viewed in the reception area of the Orchard Building (on Parents' Day). The basis for the graphical theme of this year's display poster is taken from Sophia Burnell's project. Sophia – with boundless ambition – set about writing and illustrating a story book for children. Undaunted by the scale of this task, two terms and many watercolours later she succeeded in her goal and the book was complete. It is – indeed, all this year's projects are – a very considerable achievement. Inquisitiveness and independent learning really are alive and well in Bedales. I hope you enjoy looking at our students' work as much as I have this year.

Michael Truss, *Mathematics teacher*



Cover

Individuality

Director's Cut – Nina Hemmings' *Stay*

Nina Hemmings has been at Bedales, girl and woman, arriving back in 1995. Her career in GU32 culminated during a final year that saw her interest in theatre and writing peak, with her fully realised play produced in the Bedales Olivier Theatre in February, as part of the student-led Director's Cut season. *Stay* is a five character exploration of the psychology of abandonment. If that sounds dry, then *Stay* confounded expectations with its wry, pithy and at times outrageous story. Set in a boarding school dormitory during a half term, the quintet of mysteriously deserted students face something disturbing from their past referred to as 'the game'. The key question the play asks – and a very Bedalian question too – is whether there should be boundaries to what we create in private.

Nina began writing her play in summer 2010 at the end of 6.1. Following a series of fruitful autumn rewrites, it was staged to significant acclaim in early 2011. However, most pleasingly, that is only the start of *Stay's* journey. The script was sent to London production houses. An initial response came from The Bush Theatre and a subsequent meeting with the Associate Director, which has led to a continuing correspondence and a future of planned submissions.

Shortly afterwards the prestigious Royal Court courted Nina with a phone call from the head of the literary department. Nina has been asked to join their Young Writer's Programme,

which playwrights such as Polly Stenham, Lucy Prebble, and Anya Reiss have also attended.

Nina's own journey will lead her imminently towards the USA where she will be in New York, continuing a study of Liberal Arts with a focus on playwriting (dipping out of the English education system), before she returns in May to develop work with the Royal Court.

We caught up with Nina as her A Level papers were drawing to a close.

What makes you want to write?

On the surface it's a fun pastime. Making people up and playing around with how they relate to each other is really fun. Underlining this though, is how writing has a way of ordering our thoughts. I think dialogue especially helps explore and deal with conflicting voices which we all carry around and wrestle with. These can be the most mundane clashes or things which shape lives. Usually one leads into another, I find.

How did you find directing your own work? Is it hard to let go of it and give it to a cast?

Every rehearsal was different, although always challenging. It was like how I imagine having bi-polar might be: Never steady and always resting on some extreme. Always exhilarating though. Sometimes an actor would say a line in a way which wasn't how

I intended, but they made it so much better than I could have imagined. Sometimes falling short of the image in my head was frustrating. Learning to be flexible was important as well as striking a balance between committing to the execution of ideas while also knowing when to let go of the ones that didn't work. I was lucky to have a cast who knew the characters so intimately and with such affection. The point of giving it over to them and the audience was surprisingly liberating.

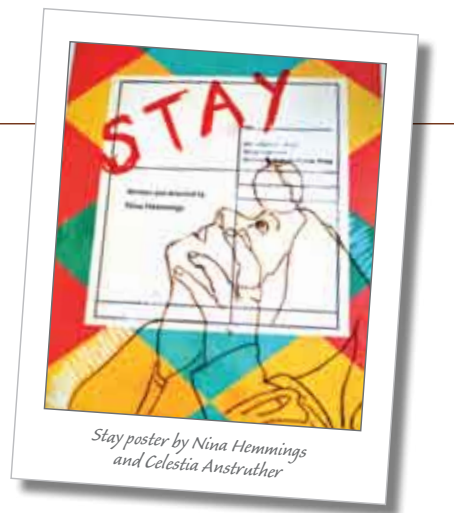
The craft of the writer is a solo slog. The craft of the director is a team game. Which one suits you?

I don't know. I haven't had enough experience of the two. At the moment the solo slog, but it's only half the job. You need a director to complete the task. A director brutally cuts into the isolation and gradual self-indulgence.

Bedales treasures its identity and you yourself have been a passionate and outspoken curator of that.

What do you hope for the future for the school?

Bedales gives you the chance not to grow up too fast. You can extend childhood for as long as feels comfortable because it's allowed, which is not the case in all places, especially today. I think that should be continued, as well as abolishing the concept that one has to wait for next year or the year after for the entitlement to make a point or to create something new.



Stay poster by Nina Hemmings and Celestia Anstruther

Would you send your own children here?

If I have children.

What's the future for theatre?

There is a very exciting young female playwright movement happening now. I hope it continues into the future. Polly Stenham, Lucy Prebble, Anya Reiss, Alia Bano, and Bola Agbaje are motivating it on. It is such a landmark that critics are recognising and drawing attention to the fact that this work is all coming from young women, asking questions like 'Where the hell are all the male playwrights?', focussing on gender, rather than categorising the writers by what appears in their scripts - very revealing of attitudes towards women today I think.

Jay Green, *Head of Drama* in discussion with **Nina Hemmings** (6.2)

Independence

Swaziland – five years on

In 2007, Bedales adopted a dilapidated co-educational school in Swaziland with 350 students. The school had insufficient classrooms, no water, no electricity, a lack of school furniture and no toilets; many children did not have any shoes and 18 pupils were orphans. Bedales students and teachers got to work, making a difference through fundraising and physically helping with Mbalenhle Primary School's development project. Since the involvement of Bedales, Mbalenhle now has:

- Electricity and running water
- A sanitation block with eight flushable toilets and four shower units
- A cook to ensure the children are fed regularly
- A 26-bed hostel for orphans on the school premises, with staff quarters
- A new library stocked with books donated by Bedalians
- Three extra classrooms
- 100 desks and chairs
- Sports, ICT and multimedia equipment
- A 1km perimeter fence
- Free range poultry, cattle and a vegetable patch to encourage self-sufficiency

Every year for a week during half term, Bedales sixth form students and teachers have visited Swaziland to help the pupils and teachers of Mbalenhle.

The students have to work hard prior to the trip to raise funds for their journey because of their passion for the project.



Time together in Swaziland



Fun at break time

Once in Swaziland they learn more about themselves as individuals through the tasks they perform, the people they interact with and the responsibility to make the trip a success, from cooking food for their friends and teachers to running a lesson for pupils of Mbalenhle. Every student leaves Swaziland having been touched in some way by the experience. Making a contribution to the lives of others has an effect that lasts.

This year 12 sixth formers worked hard from morning to night in 30 degrees heat to make further improvements to the school. Along with teachers Lindsey Barnes and Alex McNaughton,

the students laid water pipes to staff accommodation and painted the new library. They also had a go at teaching, much to the delight of Mbalenhle teachers. In pairs, the students were given 10 minutes to talk about English politics, history, geography, culture and nature. They even made English maps for each of the children to have as a keepsake.

Bedales' visit to Swaziland was captured by Swazi TV during a special launch ceremony for the latest building projects, which was attended by Swazi's Minister of Education. The students particularly enjoyed playing with the children after work and school had finished and felt they really got to know them well.

Commenting on the visit, Lindsey Barnes, said: *"This was my second trip to the Swaziland school project and one thing that I was very pleased to observe was the improvement in the orphans since last year. They looked healthy and well-fed and it was lovely that some of the children who I had seen last year were no longer suffering from skin conditions and were clearly benefiting from receiving the care, nourishment and education that they deserve. This is thanks to the construction of an orphanage next to the Mbalenhle School so that they can be better cared for."*

Bedales has raised over £60,000 for the Mbalenhle Primary School, which has contributed significantly to the health and wellbeing of Mbalenhle's

pupils. The Greendale Foundation has also been instrumental in supporting the project with their very generous donations. The aim now is to enable the school to become self-sufficient through the addition of livestock and a multiple independent water supply. At the end of May, Ransi Jayatissa spent two weeks helping with a new borehole near the school and a container has recently been shipped to the school with more equipment donated by Bedalians including bikes, two pianos and hundreds of stools and books.

Bedales would like to thank all students, parents, staff and the Greendale Foundation for their contributions, which have made this project such a success. There will be a talk on the Swaziland Project in the Reading Room on Parents' Day at 2pm and a display on the library steps.



Pupils at Mbalenhle Primary School



Mbalenhle Primary School

Annual Update 2010/11

There was much celebration and congratulation over the 2010 Bedales exam results. Our A Level students achieved 70% A*-B, which was the best rate for several years, as well as some extraordinary Extended Project results (14 A*s and 14 As) confirming the highly developed independent learning skills honed by Bedalians over time, not least through the BACs. The combined GCSE/ IGCSE/ Bedales Assessed Courses pass mark of 96% at grades A*-C is a percentage point higher than last year despite the fact that more of our students are taking several tougher IGCSE courses, and so we were thrilled with our continued improvement.

The curriculum continues to evolve. We have had Ancient Greek formally on the GCSE menu for the first time this year, with some enthusiastic students featuring in an *Independent* article about the revival of the Classics at Bedales. Our first set of triple award IGCSE scientists have been forging their way to an even greater understanding of the natural world. Students have been busily learning Italian and Russian in greater numbers than ever before, with further expansion expected next year. Languages in general will benefit next year from more curricular time. We are looking forward to bringing in our enhanced PSHE provision next year under the banner of 'Block Time',

which will include elements of PSHE, current affairs, citizenship and service. In particular, we are introducing the Youth Philanthropy Initiative in Block 4 which will see students actively engaging in researching and supporting a charity of their choice, which we are confident will lead to even more outward-looking and socially aware citizens.

We place a high value on new students feeling part of the Bedales community as quickly as possible. Whether they arrive in Block 3 from Dunhurst or other schools, or in the Sixth Form, our induction programme is designed to support a swift and smooth transition. For Block 3s, their first week is a gentle and thorough introduction to senior school ensuring that students are prepared for the academic demands and feel secure with the topography of the site. The second week at the Ullswater Outward Bound Centre provides an opportunity for social integration, team-building and personal growth. By week three, they are already feeling thoroughly Bedalian! Students are offered comprehensive advice and support in Block 5 and throughout Sixth Form to help plan their next step. This includes 1-1 and group discussions, information sessions with parents, and application and interview preparations involving admissions staff from universities and art colleges, with whom we are

developing closer relations. Bedalians achieved an excellent set of university places in an extremely competitive environment, with our Oxbridge offers being the best in a decade, and many other excellent offers too – our top ten higher education destinations over the last ten years include Oxbridge, Russell Group universities and art colleges. For the first time this summer we organised an OB university fair bringing together sixth formers with Bedalians to learn from the front-line, informing our students' choices.

Such is the strength of the Bedales community that many informal gatherings take place of Old Bedalians throughout the year. In summer 2011, the school has organised reunions for the classes of 2001, 1986, 1967 and 1966. The John Haden Badley Society, bringing together members of our community who would like to leave a legacy to the school, met for their annual lunch in Steep in May. We appreciate all the help and support from our community, particularly for the new John Badley Foundation bursary initiative to broaden access to our schools; OB and former music scholar Johnny Flynn returned for a wonderful afternoon of song-writing and a sell-out fundraising concert.

60 full-time and 15 part-time staff teach at Bedales, including eight house staff and four residential house tutors. As the school year comes to an end, we

inevitably say farewell to colleagues who we will miss greatly and wish them good fortune. Sarah Chubb is retiring as Steephurst housemistress and will be sadly missed. Likewise, Becks Hobson leaves to take up a well-deserved promotion as Deputy Head at Frensham Heights, and will be replaced by Katie McBride. Helen Farmer, Head of Modern Foreign Languages, also leaves us as does Sally Dawson-Couper, Head of Maths. Michael Truss will replace her in that role. Kevin Adlam is leaving after many years in the PE department and sterling work as Examinations Officer. He will be replaced by Kevin Boniface. Three colleagues, Angela Bradley, Kate Firmston and Freddie Parton, who have been with us temporarily move on in July and we also wish them well.

We are grateful to the many parents who help the Bedales Parents' Association to raise funds and support the school's aims. A senior school sub-group and full BPA committee meet termly to discuss issues and share ideas for improvement; we have focused much time together on the Healthy Choices initiative and the presentation of the students' academic results to the world beyond the school. Parents have helped at open days, parents' meetings, parents' day itself, and with the allocation of travel awards and grants for small scale projects.

Annual Update *continued*

Bedales remains in a good financial position and we are continuing to invest in our teaching, learning and pastoral facilities. This year has seen the completion of: the first of three phases of the refurbishment of Steephurst girls' boarding house, which has had a dramatic effect on the quality of life for the girls; the new roof on the sports hall and an internal refurbishment of the hall itself; and the replacement of a substantial number of windows in Boys' Flat. These projects have resulted in far better accommodation and facilities and through the installation of efficient insulation and modern heating systems Bedales will be that bit greener as a result. We are looking ahead to another busy summer with the second, and by far largest, phase of the Steephurst refurbishment, addressing the main part of the building; the changes will be significant and sympathetic, and we hope you like them. We will also be looking to refurbish 6.2 Flat. These projects will run alongside a programme of continuous improvement in our buildings that will also see improved IT resources.

We have seen changes to the Board of Governors, saying farewell to Brian Ellis and OB Matthew Batstone who oversaw a transformation of the school's approach to marketing. We welcome to the Board Charles Watson, Michele Johnson and John Lippiett.

Again this year we have seen good use of our facilities in the holidays by the excellent Petersfield Youth Theatre. Jay Green, Head of Drama, hosted the National Independent Schools' Drama Association. Many local primary schools and organisations enjoy the use of our facilities including Stroud and Steep community groups, Edward Thomas Fellowship Group, and local sports clubs. Once again the Ardmere Language School will bring foreign students to board in the summer holidays to learn English. Our wonderful cricket facilities are used by the Gentlemen of Bedales and Petersfield Cricket Club juniors. The Bedales swimming club continues to attract local membership.

Looking ahead to the next school year, we will be building on the nascent work of the John Badley Foundation (JBF) and welcome the first of our new JBF scholars to the school community. We aim too to develop the ways we look outwards, building on our local outreach to give Bedales students a yet better sense of international citizenship. Above all, we will continue to hone the balancing act of providing a well-delivered academic curriculum within the schools' distinctive atmosphere and ethos.

House keeping notes

In the event of rain, picnics may be eaten in the marquee, theatre boardwalks or sports hall. Please be clear of the marquee by 3pm to allow catering staff to set up for tea.

Toilets can be found in the Orchard Building; the Quad; by the SLT; by the chemistry labs; through the Goldie and also in the sports hall. Refreshments are available from the gazebo in the Orchard in the morning.

Please note that the Summer Production is being performed in the theatre from 2.30 – parents are therefore kindly requested not to picnic on the boardwalks of the theatre after 2.00.

In the event of a whole school alarm – please move swiftly and safely to the Astroturf.

Please drive carefully and follow guides when parking and when leaving school. In case of muddy conditions, a tractor is available...

In the event of a query, difficulty or emergency please call:

0781 0860 832 (Becks Hobson) or
0781 0860 826 (John Scullion).



Arran Stamper



Harriet Selka



Phoebe Walsh



John Badley
Foundation

New Bedales products

Working with some talented designers, our own students, and some ethically sound organisations, we have produced a stylish and fitting range of Bedales items which we hope you will like. Buying them will both provide you with a unique product and support the John Badley Foundation (JBF), which is raising funds to broaden access for talented children to attend Bedales.

The items make great gifts and will be available for purchase at Parents' Day and via our website. All the profits will go to the JBF, so you can buy in the knowledge that each purchase will contribute to a life-changing opportunity for a child.

Emma Bridgewater pottery

Specially designed by Matthew Rice and offering two alternative eye-catching colour schemes, these hand-decorated half-pint mugs and 8½" plates cost £17.95 and £12.95 respectively (or £30 for the pair).

Lupton Hall tea towel

Treat yourself to a little something to brighten up your kitchen chores with this stylish tea towel displaying a line drawing of the Lupton Hall which we commissioned to mark the centenary



of one of our most striking and well-loved buildings. Price: £8.50

People Tree T shirts

For the fashion-conscious among you, why not show your support through one of our limited edition Bedales T shirts, designed by People Tree and made by the Assisi community in India, which was set up by Franciscan nuns and provides training and employment for deaf, mute and poor women. It is not often that you can buy a T shirt responsible for so much change in the world. Price: £20

Notelets

In this digital world, it is nice sometimes to receive or send a handwritten note. Our new notelets celebrate some of Bedales students' most striking recent art work as well as photos of Bedales past and present. Price: £7.50 for pack of 10.

Umbrellas

For those days when the grey clouds descend and just won't go away, lift your spirits with one of our golf umbrellas. They open out to provide enough shelter for you and a couple of friends – or a golf bag, and help to change lives too! Price: £17.50

www.bedales.org.uk/fundraising-shop



Emma Bridgewater pottery



Emma Bridgewater pottery

Summer 2011

Printed on Challenger Offset – produced from Elemental Chlorine Free bleached pulp (ECF), FSC certified – sourced from sustainable managed forests.

Bedales

Headmaster: Keith Budge
Church Road, Steep, Petersfield
Hampshire GU32 2DG
T: (0) 1730 300100

www.bedales.org.uk

Charity Number: 307332